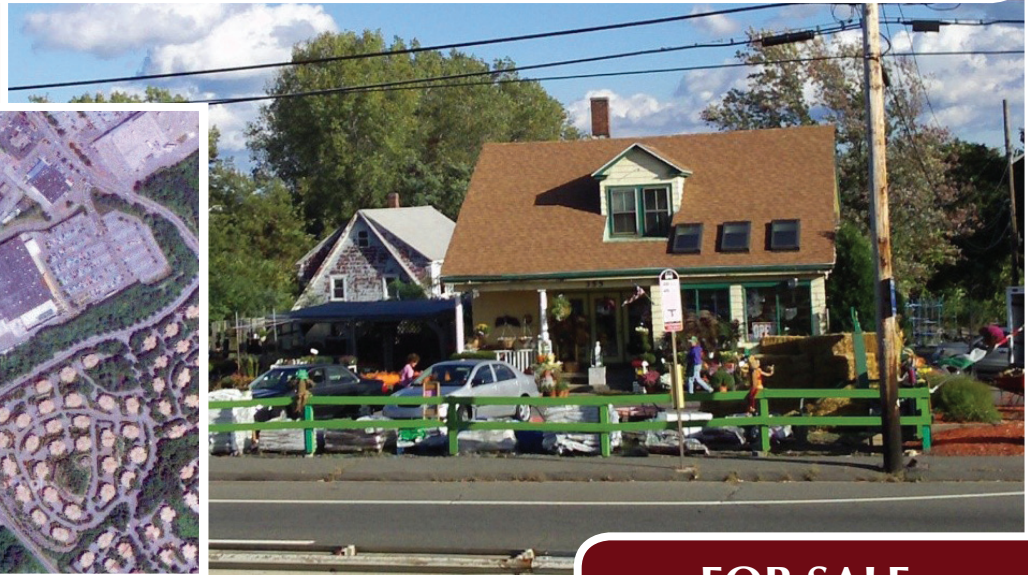
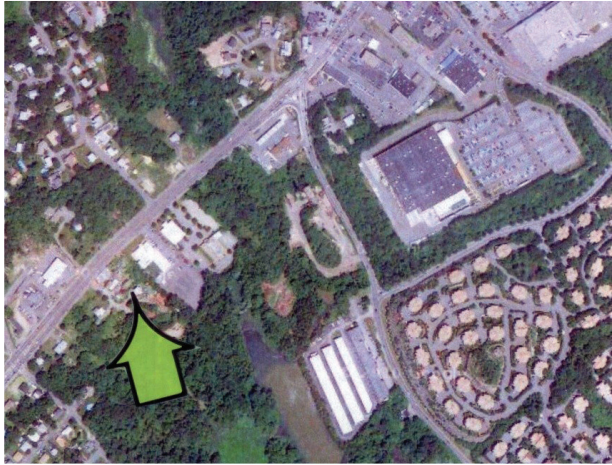
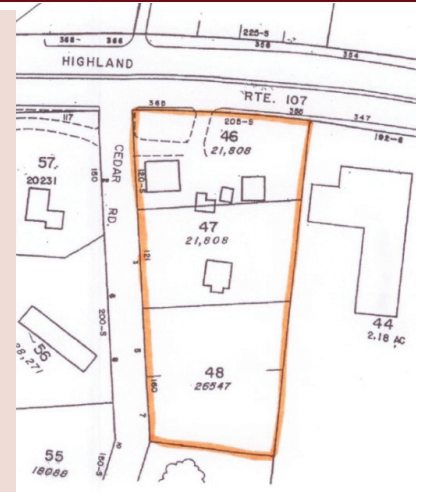


**DEVELOPMENT OPPORTUNITY**  
**1.6 ACRE RETAIL SITE**  
**SALEM, MASSACHUSETTS**



**FOR SALE**

- Location:** 355 Highland Avenue (Route 107), Salem, Massachusetts
- Description:** Currently a garden center with two buildings. One building is a 1,200 s.f. Retail shop and the other a two-family dwelling.
- Land Area:** 1.61 acres with 205' highway frontage
- Zoning:** B-2, Highway Business
- Taxes:** 17,383/year
- Comments:** Highly visible corner lot development site on Salem's best business highway. Currently, a long-standing garden center. There are two buildings on this site including a retail building and a two-family. Ideal for new retail development. Business neighbors along Highland Avenue include Target, Market Basket, Home Depot, Tri-City Sales, CVS and many others. Close to proposed new Wal-Mart and Lowe's development.
- Price:** \$1,195,000



**THE DRUMLIN GROUP**

600 Loring Avenue, Salem, MA • (978) 741-3696 • info@drumlingroup.com • www.drumlingroup.com